



Gracious Centurion

Built in 1896, this historic terraced home sits in a row of four striking residences, which are one of Fremantle's most admired and prized heritage landmarks.

Saved from demolition in the 1970s, this unique property has been fully restored blending lovely original integrity with inviting contemporary character.

Boasting 14 foot ceilings, decorative ceiling roses and cornices, Jarrah and pine floors, open fireplaces and a wine cellar, there are quality fittings and appointments throughout.

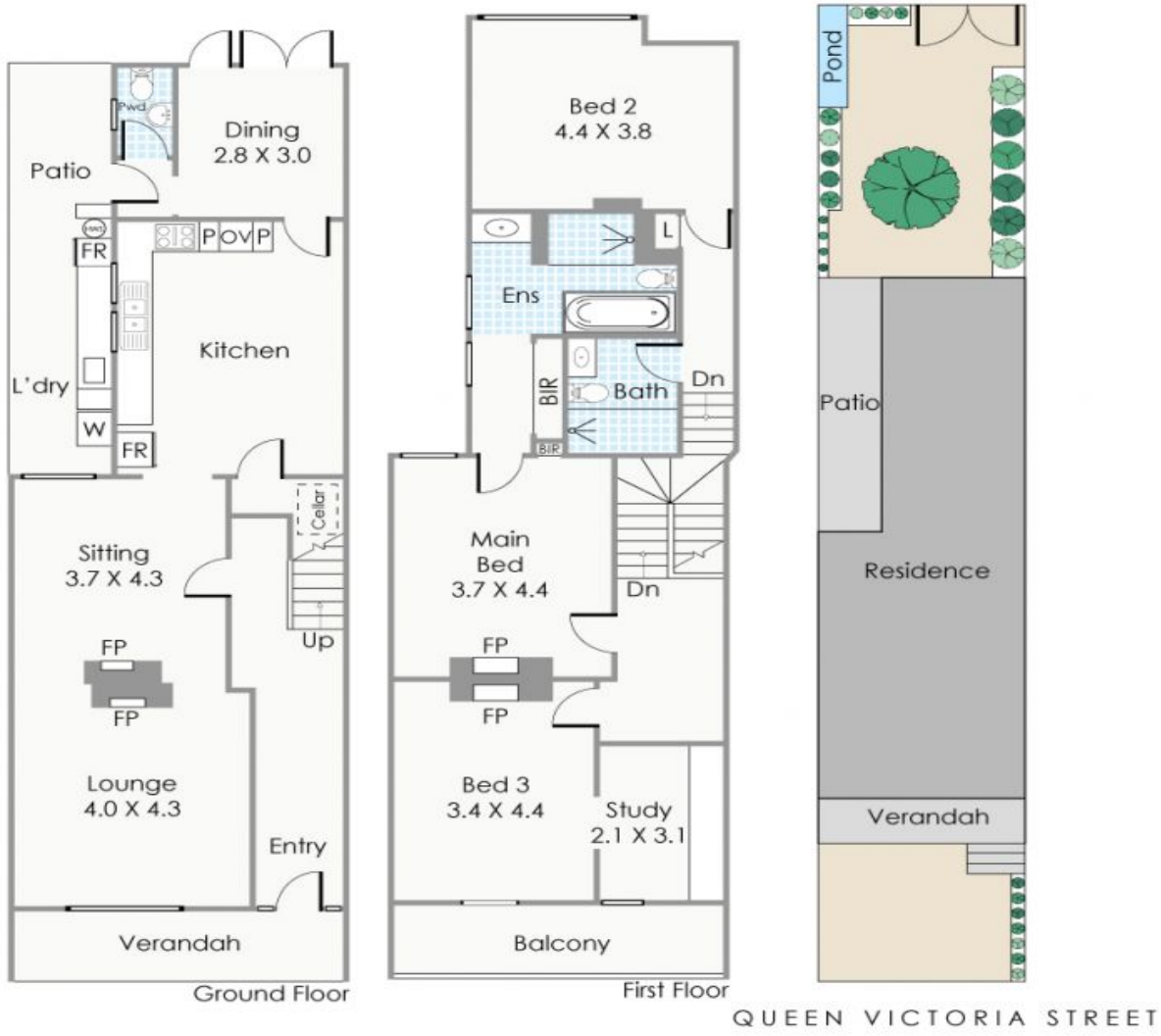
With Inner Urban zoning, this property is ideally suited to a successful home business.

The spacious rooms allow plenty of flexibility for work and living to co-exist.

With a welcoming front verandah, accommodation on the ground floor comprises a large lounge room, cosy sitting room, big country kitchen and a dining room that opens onto the shady courtyard garden.

Fremantle 22 Queen Victoria Street

HOUSE: 3 BED | 2 BATH | 1 CAR
CONTACT: Mary Burns 0413 749 944
OFFICE: Perth 08 9336 1166
ONLINE: <https://www.dethridgegroves.com.au>



Approximate Areas

GROUND FLOOR

Residence: 80m²
 Patio: 14m²
 Verandah: 8m²

FIRST FLOOR

Residence: 88m²
 Balcony: 8m²

Total Area: 198m²

This floorplan is for illustration purposes only to show the layout of the property. Measurements and total areas do not include or account for wall thickness or roof area under eaves. Not to be used for any other purpose. www.cribcreative.com.au



22 Queen Victoria Street, Fremantle

Fremantle, WA
 22 Queen Victoria Street

Disclaimer: All information contained herein is gathered from sources we believe reliable. We have no reason to doubt its accuracy, however we cannot guarantee it. All dimensions, measurements and distances are approximates. All interested parties should make and rely upon their own enquiry.
 ©The Agency Australia Pty Ltd T/A The Agency Estate Agents ABN 90 169 023 233 Corp Licence 10002231 - 397 New South Head Road, Double Bay NSW 2028 | Sydney Australia

