



Picture Perfect!

All Offers Presented By 14 July

Seller Reserves the Right to Sell Prior

Perfectly positioned for those seeking the benefits of this coastal lifestyle, this secure premium home showcases convenience and undeniable comfort throughout.

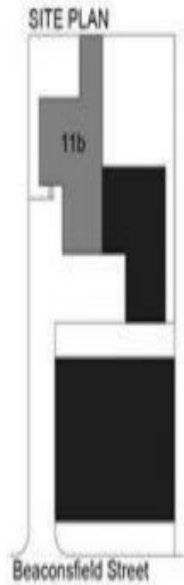
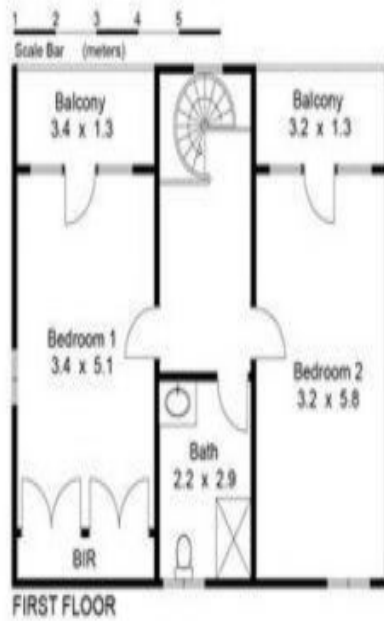
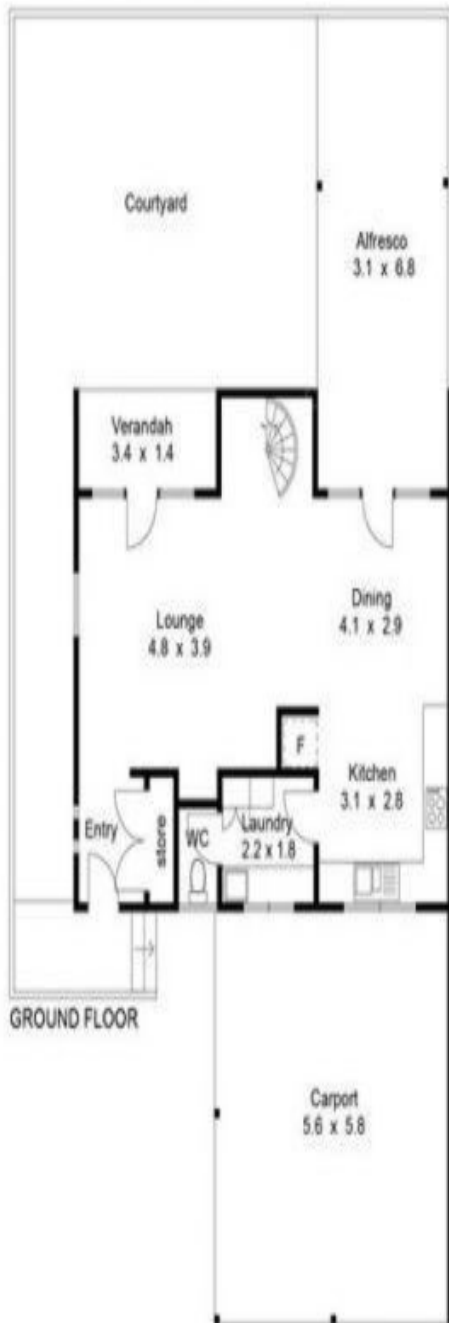
Upon entry into this beautiful home there is an immediate sense of warmth and sophistication. Offering a great open plan design with living/dining area and a fabulous renovated kitchen this address is perfect for those who wish to escape or equally for those who love to entertain. Both can be done here!

The downstairs living zones are framed by large windows and french doors, that connect the home with a serene private garden, creating a very comfortable space for entertaining guests or simply taking time out to relax. The indoor/outdoor flow is seamless.

Land: 259m2

Beaconsfield 11B McCleery Street

HOUSE: 2 BED | 1 BATH | 2 CAR
CONTACT: Chanel Majeks 0403 246 377
 Christine Majeks 0402 762 601
OFFICE: Perth 08 9336 1166
ONLINE: <https://www.dethridgegroves.com.au>



Approximate Areas	
Ground Floor	58.5 m ²
First Floor	58.5 m ²
Carport	32.5 m ²
Alfresco/Balcony	34.4 m ²
Total Area	183.9 m²

11b McCleery Street

Beaconsfield



All measurements are estimates
Plans are for demonstration only
www.cribcreative.com.au

Beaconsfield, WA

11B McCleery Street

Disclaimer: All information contained herein is gathered from sources we believe reliable. We have no reason to doubt its accuracy, however we cannot guarantee it. All dimensions, measurements and distances are approximates. All interested parties should make and rely upon their own enquiry.
©The Agency Australia Pty Ltd T/A The Agency Estate Agents ABN 90 169 023 233 Corp Licence 10002231 - 397 New South Head Road, Double Bay NSW 2028 | Sydney Australia