



UNDER OFFER by Lauri Curtain

Boasting a spacious single level floor plan, 35A Chadwick Street provides a wonderful and appealing living environment with flowing engineered timber floors, high ceilings and a simple connection to outdoor living.

Step inside and be greeted by the northern orientated separate living room providing a peaceful escape from the busyness of the central living zone to watch your favourite film or quietly read a book.

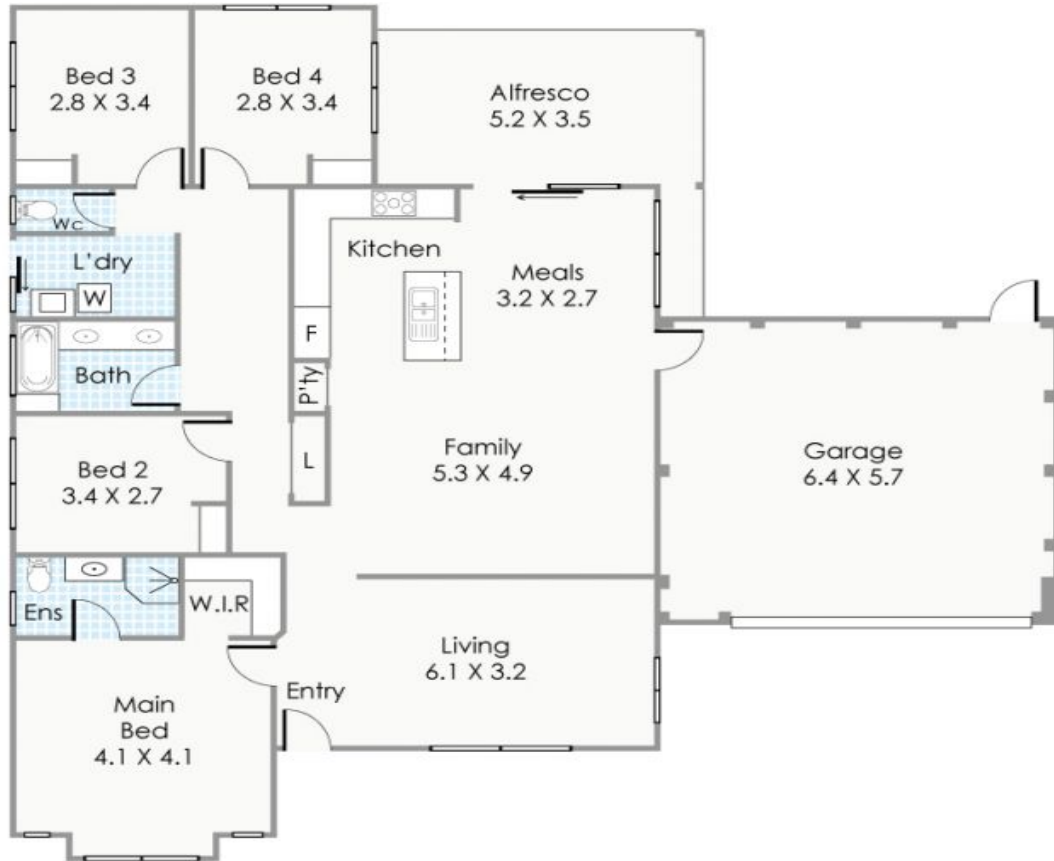
In the centre of the home, the comfortable open plan living has a reverse cycle air conditioner and provides plenty of space for lounging, dining and of course meal preparation in the highly functional kitchen with island bench, pantry, 5 burner gas cooktop, oven, dishwasher and walk-in pantry.

From the dining space, sliding doors open creating a simple connection to the covered and paved outdoor living space overlooking the easy-care garden with sandpit and kids cubby ideal for fun family activity.

Land: 396m2

Hilton 35A Chadwick Street

HOUSE: 4 BED | 2 BATH | 2 CAR
CONTACT: Lauri Curtain 0422 478 150
OFFICE: Perth 08 9336 1166
ONLINE: <https://www.dethridgegroves.com.au>



Approximate Areas

Residence:	153m ²
Garage:	39m ²
Alfresco:	16m ²
Total Area:	208m ²

This floorplan is for illustration purposes only to show the layout of the property. Not to be used for any other purpose. www.cribcreative.com.au



35A Chadwick Street, Hilton



Hilton, WA
35A Chadwick Street

Disclaimer: All information contained herein is gathered from sources we believe reliable. We have no reason to doubt its accuracy, however we cannot guarantee it. All dimensions, measurements and distances are approximates. All interested parties should make and rely upon their own enquiry.
©The Agency Australia Pty Ltd T/A The Agency Estate Agents ABN 90 169 023 233 Corp Licence 10002231 - 397 New South Head Road, Double Bay NSW 2028 | Sydney Australia

