



Award Winning Stylish Design - Liv Apartments

A common theme shared throughout the apartments at Liv, is space. Through clever design, the architects at Hassell have been able to create highly efficient and spacious apartments which maximise the living and entertaining areas.

This two bedroom, two bathroom apartment on level 5 has 79 square metres of cleverly designed internal living and features segregated bedrooms, a walk-in robe to the master bedroom and a large 10 square metre balcony. If you're seeking a different layout, or a two bedroom apartment at a different price point, there are a few options to choose from, with internal living areas ranging from 65 to 80 square metres.

When it comes to quality, you'll find the standard of materials, finishes and appliances will impress the most fastidious of buyers, while the cost conscious will appreciate the energy saving inclusions like ceiling fans, and water and energy efficient fittings and fixtures.

Fremantle 83/51 Queen Victoria Street

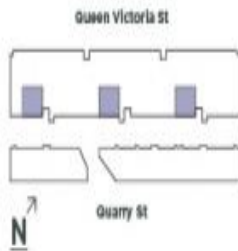
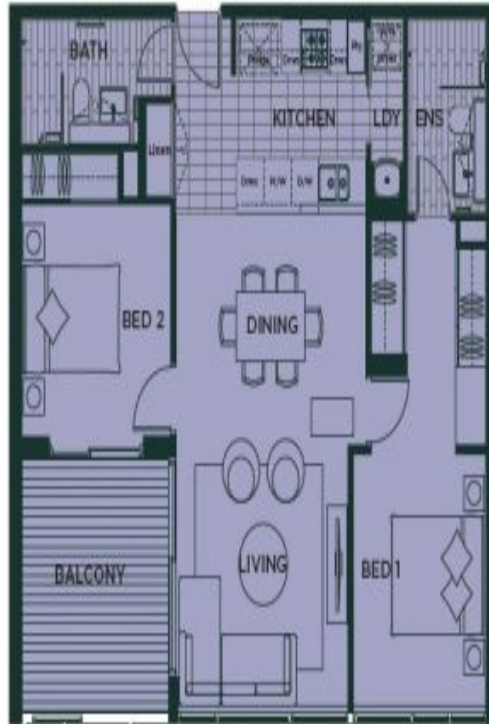
APARTMENT: 2 BED | 2 BATH | 2 CAR
VIEW: Wed, 26 Feb @ 11:30 am - 12:30 pm
 Sat, 29 Feb @ 9:30 am - 10:00 am
CONTACT: Christine Majeks 0402 762 601
 Chanel Majeks 0403 246 377
OFFICE: Perth 08 9336 1166
ONLINE: <https://www.dethridgegroves.com.au>

TYPE C3

Queen Victoria St



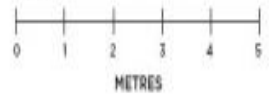
Internal	77m ²
Balcony/courtyard	10m ²
Total	87m ²
Store	Yes



Apartment No. _____

Price _____

SCALE



Units 32, 40, 48, 75, 83, 91, 121, 129 and 137 are allocated a tandem carbay.



Defence Housing Australia (DHA) and its approved sales agency do not guarantee, warrant or represent that the information contained in this advertising and marketing material is correct. Any interested parties should make their own enquiries, seek expert advice and review the contract terms.



Fremantle, WA
83/51 Queen Victoria Street

Disclaimer: All information contained herein is gathered from sources we believe reliable. We have no reason to doubt its accuracy, however we cannot guarantee it. All dimensions, measurements and distances are approximates. All interested parties should make and rely upon their own enquiry.
©The Agency Australia Pty Ltd T/A The Agency Estate Agents ABN 90 169 023 233 Corp Licence 10002231 - 397 New South Head Road, Double Bay NSW 2028 | Sydney Australia

