



## Provincial Escape

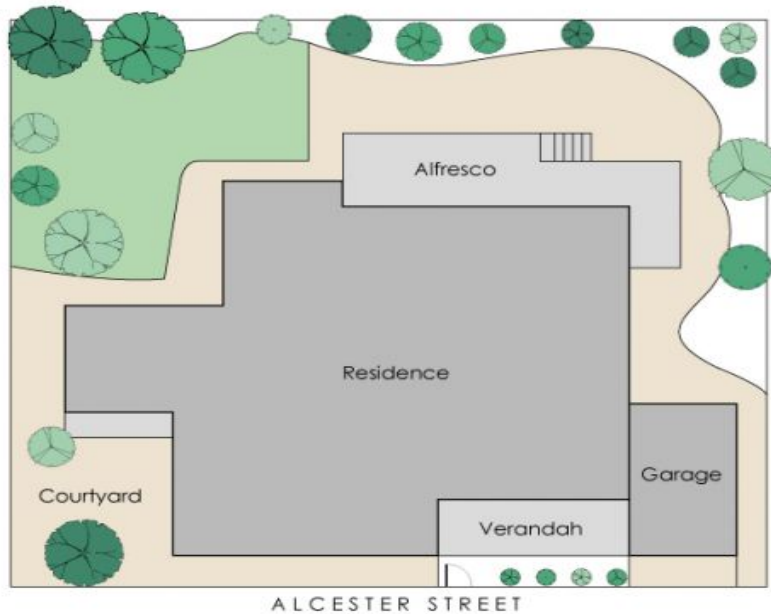
This captivating, double-fronted stone home resembles a French provincial cottage with its charming facade. A harmonious blend of original and contemporary features that will pull at your heart strings. Beautifully defined and versatile living spaces offer a wonderful surprise of relaxed entertaining areas both inside and out.

Off the central hallway are two good sized rooms with high decorative ceilings and a lovely northerly aspect to the front terrace. The formal sitting room is elegant with an ornate fireplace and attractive French doors. The home then opens onto a spacious open-plan living area with a modern kitchen featuring a stainless-steel bench top and smart timber cabinetry. This lovely light layout is surrounded by sweet sash windows and charming French doors that open onto the undercover decked veranda and lush garden beyond.

Land: 430m2

## East Fremantle 5 Alcester Street

**HOUSE:** 4 BED | 2 BATH | 1 CAR  
**CONTACT:** Linda Digby 0402 122 267  
**OFFICE:** Perth 08 9336 1166  
**ONLINE:** <https://www.dethridgegroves.com.au>



Approximate Areas

LOWER GROUND FLOOR

Residence: 15m<sup>2</sup>

GROUND FLOOR

Residence: 162m<sup>2</sup>

Garage: 17m<sup>2</sup>

Alfresco: 26m<sup>2</sup>

Verandah: 11m<sup>2</sup>

Total Area: 231m<sup>2</sup>

This floorplan is for illustration purposes only to show the layout of the property. Not to be used for any other purpose. [www.cribcreative.com.au](http://www.cribcreative.com.au)



5 Alcester Street, East Fremantle

**East Fremantle, WA**  
5 Alcester Street

Disclaimer: All information contained herein is gathered from sources we believe reliable. We have no reason to doubt its accuracy, however we cannot guarantee it. All dimensions, measurements and distances are approximates. All interested parties should make and rely upon their own enquiry.  
©The Agency Australia Pty Ltd T/A The Agency Estate Agents ABN 90 169 023 233 Corp Licence 10002231 - 397 New South Head Road, Double Bay NSW 2028 | Sydney Australia

