



Inviting Transformation

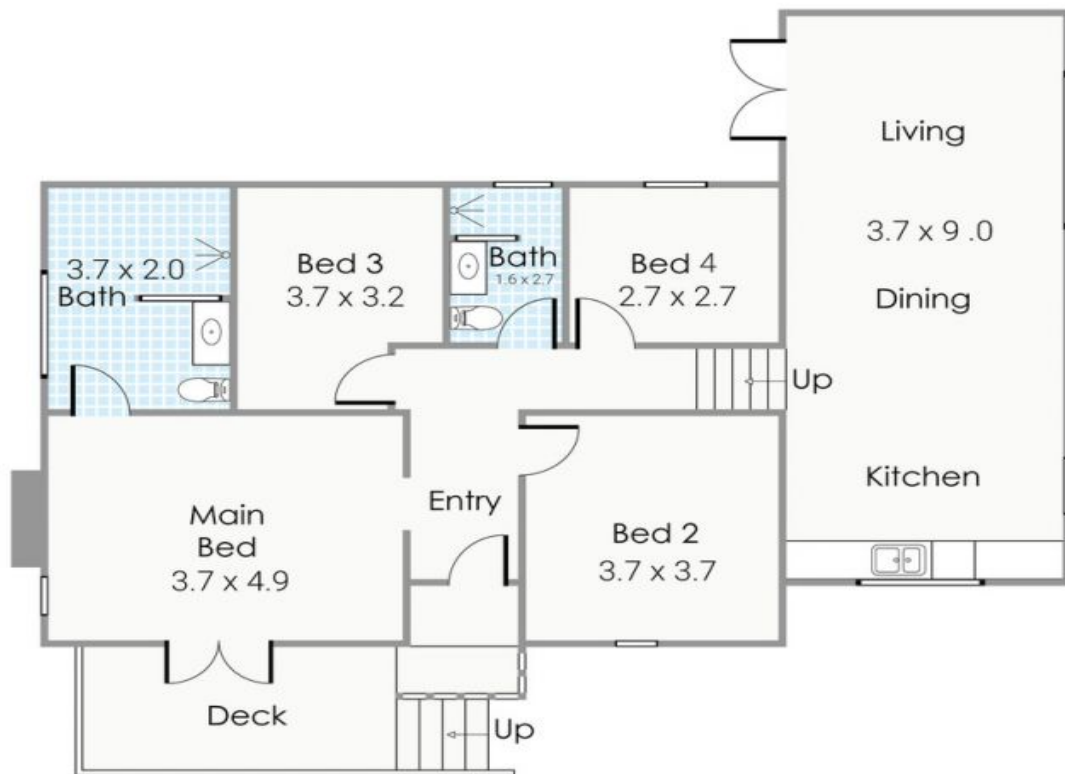
Four Bedroom Stunner in the Heart of Hilton - Starting out as a sweet two bedroom original Austrian modest prefab home, this gorgeous Hilton cottage has been transformed into a generous and modern four bedroom home nestling in the spacious garden, with an inviting deck in the front overlooking the neighbourhood and a private garden with patio and lawn to the rear, ideal for young kids to play.

The home has been transformed into a fresh, bright and coastal abode while retaining all the character features of Austrian pine flooring, high ceilings, sash windows, and brick fireplace. The spacious main bedroom has pretty French doors to the front deck and a luxurious en suite bathroom. A generous single and another two double bedrooms share the modern family bathroom in the centre of the home.

Land: 355m2

Hilton 24 Grigg Place

HOUSE: 4 BED | 2 BATH | 2 CAR
VIEW: Sat, 26 Sep @11:00 am - 11:45 am
CONTACT: Cindy Loffell 0412 120 050
OFFICE: Perth 08 9336 1166
ONLINE: <https://www.dethridgegroves.com.au>



This floorplan is for illustration purposes only to show the layout of the property. Measurements and total areas do not include or account for wall thickness or roof area under eaves. Not to be used for any other purpose. www.cribcreative.com.au



24 Grigg Place, Hilton

Hilton, WA

24 Grigg Place

Disclaimer: All information contained herein is gathered from sources we believe reliable. We have no reason to doubt its accuracy, however we cannot guarantee it. All dimensions, measurements and distances are approximates. All interested parties should make and rely upon their own enquiry.
 ©The Agency Australia Pty Ltd T/A The Agency Estate Agents ABN 90 169 023 233 Corp Licence 10002231 - 397 New South Head Road, Double Bay NSW 2028 | Sydney Australia

