



SOLD by Lauri Curtain

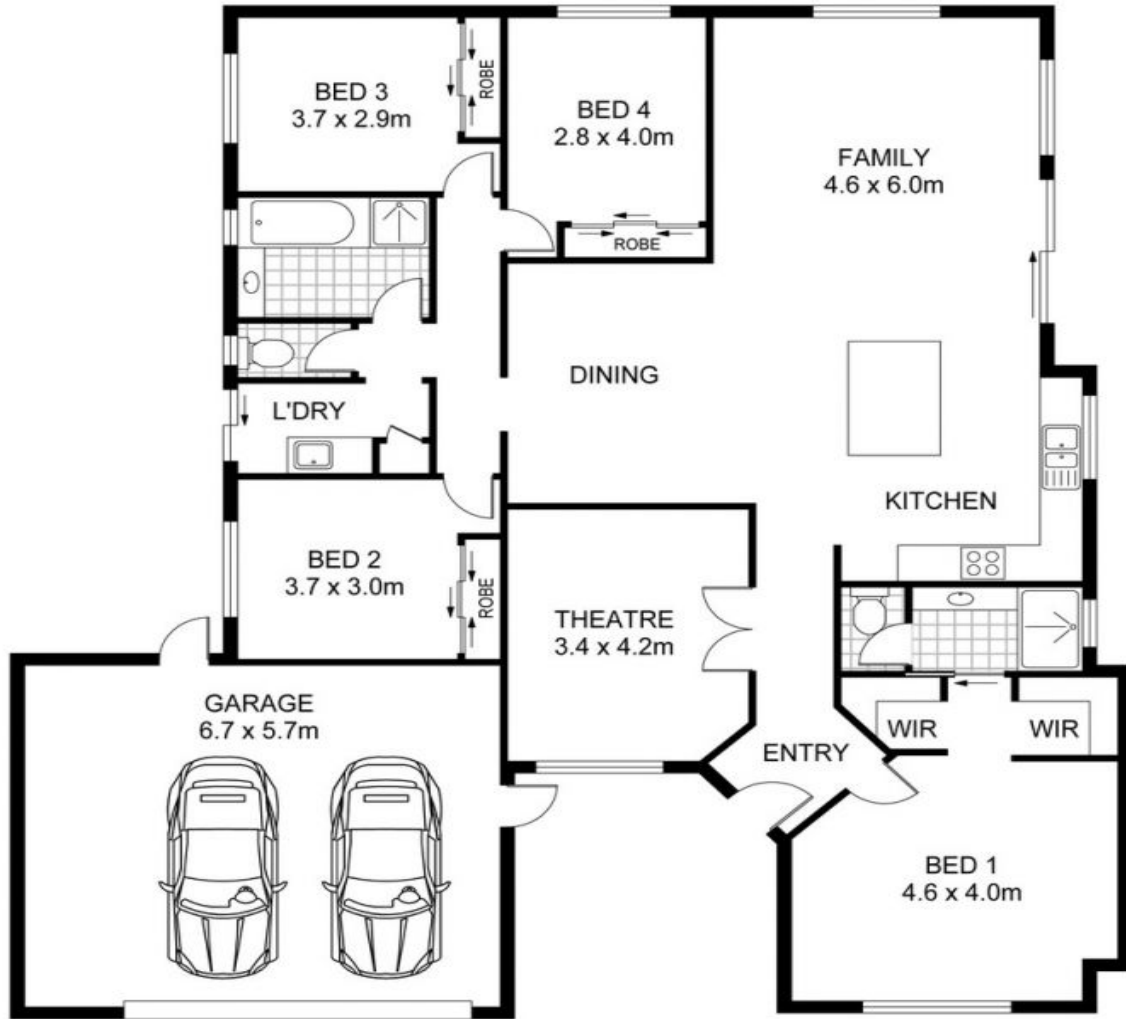
Often reputed to be small, be prepared to be surprised by this rear home. Tucked away, this sizeable home has excellent liveability and space to accommodate the growing family. Modest at first glance, this 2014 built single level property offers large open plan living, separate lounge room, 4 bedrooms, 2 bathrooms, outdoor living space and double garage.

Inside, high 31 course ceilings throughout give a sense of space. To one side of the wide entry, the carpeted lounge room offers a quiet retreat, away from the busyness of the open plan living to relax and read or simply watch your favourite film.

Moving further into the home, you'll enjoy the well-proportioned layout with the kitchen centre stage overlooking the open plan living with split system air conditioner and connecting simply to the outdoors. Stone benchtops, quality appliances, ample cupboard space and a wide island bench combine making meals preparation easy. Whether you're cooking for the family or entertaining friends, it's the perfect setting with a simple transition from indoor to outdoor living accessible via sliding doors.

Hilton 29A Lee Avenue

HOUSE: 4 BED | 2 BATH | 2 CAR
CONTACT: Lauri Curtain 0422 478 150
OFFICE: Perth 08 9336 1166
ONLINE: <https://www.dethridgegroves.com.au>



Scale in metres. Indicative only. Dimensions are approximate. All information contained herein is gathered from sources we believe to be reliable. However we cannot guarantee its accuracy and interested persons should rely on their own enquiries

Area	M ²
Living	157
Garage	38

Floor Plan: www.project3axis.photography

29A Lee Avenue, Hilton

Hilton, WA

29A Lee Avenue

Disclaimer: All information contained herein is gathered from sources we believe reliable. We have no reason to doubt its accuracy, however we cannot guarantee it. All dimensions, measurements and distances are approximates. All interested parties should make and rely upon their own enquiry.
 ©The Agency Australia Pty Ltd T/A The Agency Estate Agents ABN 90 169 023 233 Corp Licence
 10002231 - 397 New South Head Road, Double Bay NSW 2028 | Sydney Australia

