



Charming Country Appeal!

Lovingly restored with charming country appeal, this extended 1920's brick and iron residence is a delightful family home with much to offer in the John Curtin College of The Arts & East Freo Primary catchment area.

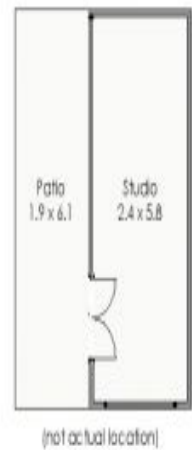
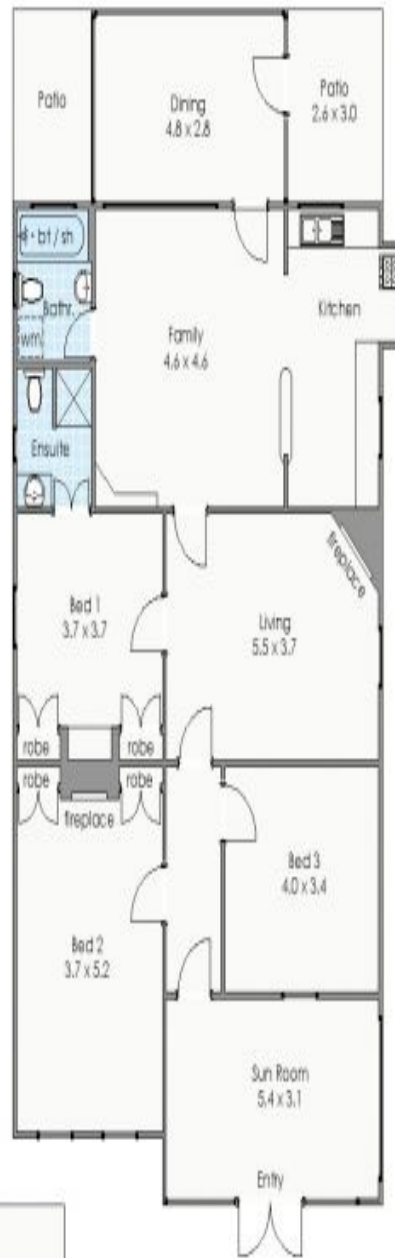
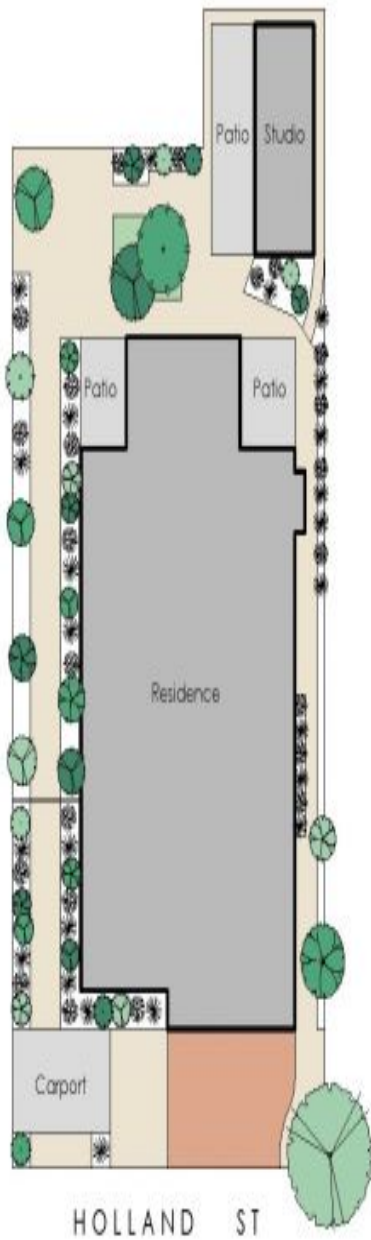
Affording 3 good sized bedrooms, 2 generous living rooms, atrium dining, north-facing sun-room entry and two bathrooms in the main dwelling, plus a garden studio/workroom or 4th bedroom offering great flexibility for changing family needs.

With a spacious layout, the home offers easy livability and enjoys character features throughout including high ceilings, ceiling roses, lovely jarrah timber floors, fire places and original sash windows.

The country kitchen adjoins the cozy family room and has warm wood tones and a generous layout.

Fremantle 97 Holland Street

HOUSE: 4 BED | 2 BATH | 1 CAR
CONTACT: Mary Burns 0413 749 944
OFFICE: Perth 08 9336 1166
ONLINE: <https://www.dethridgegroves.com.au>



Approximate Areas

Residence:	161m ²
Carport:	12m ²
Patios:	24m ²
Studio:	15m ²
Total area:	212m ²

All measurements are estimates.
All dimensions are in metres.
Plans are for demonstration only.
www.ctbcreative.com.au



97 Holland Street, Fremantle

Fremantle, WA
97 Holland Street

Disclaimer: All information contained herein is gathered from sources we believe reliable. We have no reason to doubt its accuracy, however we cannot guarantee it. All dimensions, measurements and distances are approximates. All interested parties should make and rely upon their own enquiry.
©The Agency Australia Pty Ltd T/A The Agency Estate Agents ABN 90 169 023 233 Corp Licence 10002231 - 397 New South Head Road, Double Bay NSW 2028 | Sydney Australia