



## Haven on High in JCCA Catchment - Viewing by Appointment Only

Set within the John Curtin College of the Arts catchment area, this home offers the potential to subdivide while retaining the Californian bungalow to the front of the block. The planned upgrade of High Street, aimed at improving safety and relieving congestion, includes the construction of noise walls and is sure to benefit the new owners of this home.

With an enchanting garden leading out from the inviting alfresco patio, you'll be transported to another world when viewing this charming character home. A seamless blend of old and new, this timeless classic has been lovingly maintained and thoughtfully modernised to accommodate the modern family. Elegant polished wooden floors and panelled walls hark back to a gracious past, with high ceilings and large windows bringing light and air to flooding into the home.

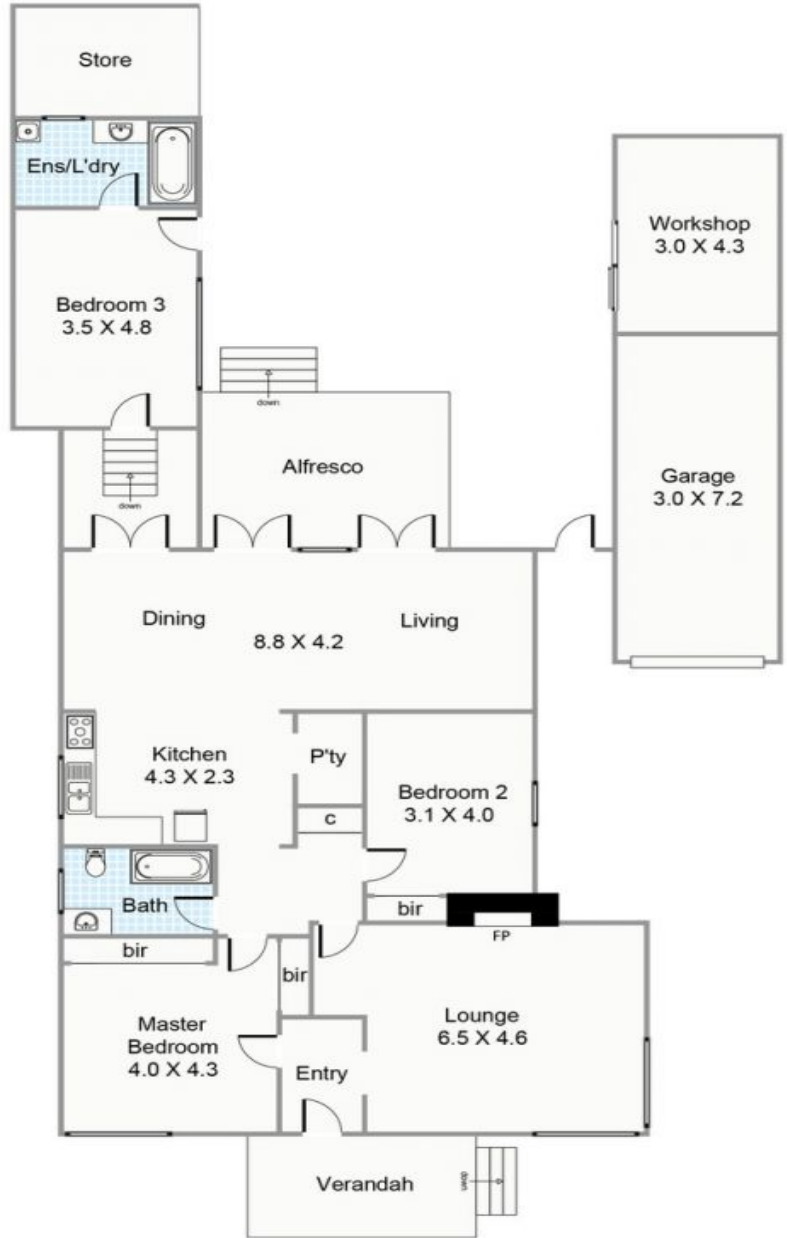
Land: 757m2

## Fremantle 324 High Street

**HOUSE:** 3 BED | 2 BATH | 1 CAR  
**CONTACT:** Cindy Loffell 0412 120 050  
**OFFICE:** Perth 08 9336 1166  
**ONLINE:** <https://www.dethridgegroves.com.au>



High Street



Approximate Areas

Residence:	156.7m <sup>2</sup>
Garage/ Work.:	36.2m <sup>2</sup>
Store:	8.7m <sup>2</sup>
Alfresco:	16.2m <sup>2</sup>
Verandah:	9.8m <sup>2</sup>

Total Area: 227.6m<sup>2</sup>

All measurements are estimates  
All dimensions are in metres.  
Plans are for demonstration only.  
[www.cribcreative.com.au](http://www.cribcreative.com.au)



324 High Street, Fremantle

## Fremantle, WA

324 High Street

Disclaimer: All information contained herein is gathered from sources we believe reliable. We have no reason to doubt its accuracy, however we cannot guarantee it. All dimensions, measurements and distances are approximates. All interested parties should make and rely upon their own enquiry.  
©The Agency Australia Pty Ltd T/A The Agency Estate Agents ABN 90 169 023 233 Corp Licence  
10002231 - 397 New South Head Road, Double Bay NSW 2028 | Sydney Australia

