



## ECO CHIC IN THE VALLEY

Offered to the market for the very first time, 88A Hope Street, White Gum Valley is a rare opportunity in this popular family friendly suburb of Fremantle. Finding balance between having modern convenience without losing character and individual style is often a challenge with new homes - this address finds the perfect harmony between those two needs.

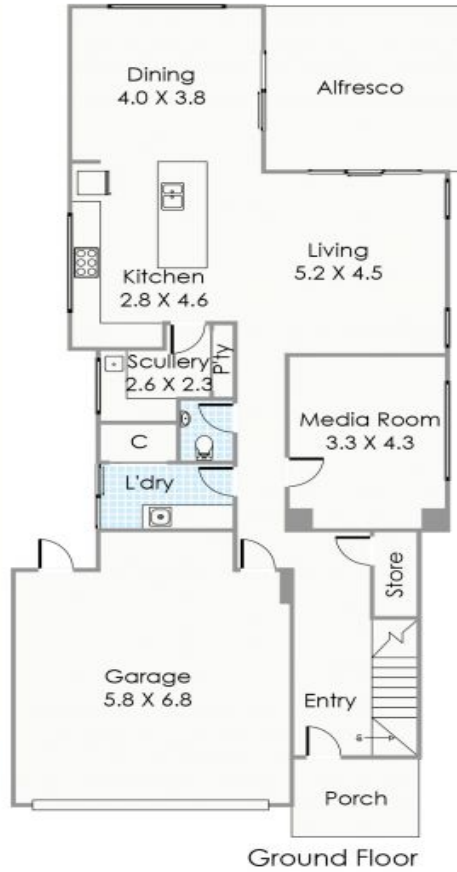
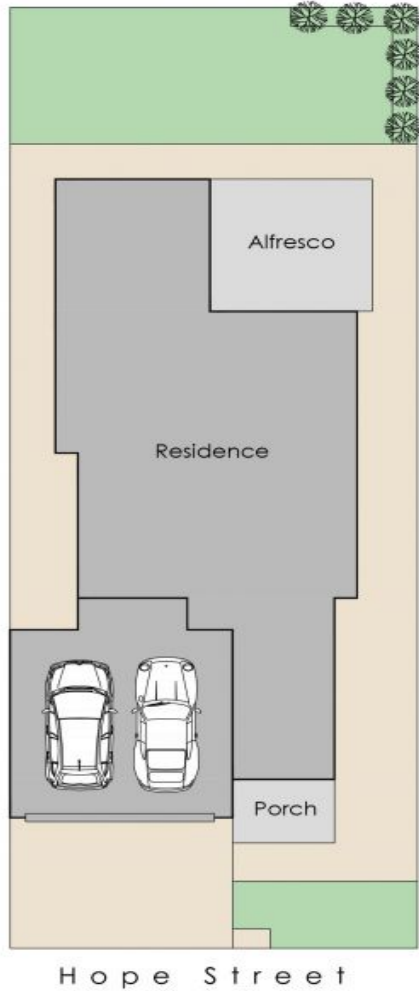
Custom designed and built the address not only looks incredible it is a functional generous home. Positioned in the popular and blossoming WGV Estate there is nothing to do here - just move in and enjoy the lifestyle that this address offers.

Built with a lifestyle in mind, this home offers a contemporary aesthetic that remains warm and inviting, a result of considered design and detailed choice by the owners. Quality fittings and fixtures and meticulous attention to detail is evident.

Council Rates: \$1,600/year (approx)

## White Gum Valley 88A Hope Street

**HOUSE:** 4 BED | 2 BATH | 2 CAR  
**CONTACT:** Chanel Majeks 0403 246 377  
 Christine Majeks 0402 762 601  
**OFFICE:** Perth 08 9336 1166  
**ONLINE:** <http://www.dethridgegroves.com.au>



Approximate Areas

<b>GROUND FLOOR</b>	
Residence:	102.3m <sup>2</sup>
Garage:	37.7m <sup>2</sup>
Alfresco:	17.8m <sup>2</sup>
Porch:	5.4m <sup>2</sup>
<b>FIRST FLOOR</b>	
Residence:	99.8m <sup>2</sup>
<b>Total Area:</b>	<b>263.0m<sup>2</sup></b>

All measurements are estimates  
 All dimensions are in metres.  
 Plans are for demonstration only.  
[www.cribcreative.com.au](http://www.cribcreative.com.au)



**88A Hope Street,  
 White Gum Valley**

**White Gum Valley, WA**  
 88A Hope Street

Disclaimer: All information contained herein is gathered from sources we believe reliable. We have no reason to doubt its accuracy, however we cannot guarantee it. All dimensions, measurements and distances are approximates. All interested parties should make and rely upon their own enquiry.  
 ©The Agency Australia Pty Ltd T/A The Agency Estate Agents ABN 90 169 023 233 Corp Licence  
 10002231 - 397 New South Head Road, Double Bay NSW 2028 | Sydney Australia

