



Peaceful Plympton Cottage

From its humble beginnings as a solid Kalgoorlie worker's cottage this residence has been transformed to a graceful family home.

22 Glyde Street is a home to fall in love with - it offers a delightful set back, established garden and shaded veranda. The central hallway is welcoming and leads past beautifully proportioned bedrooms and a relaxed reading room/study into a warm open-plan living area.

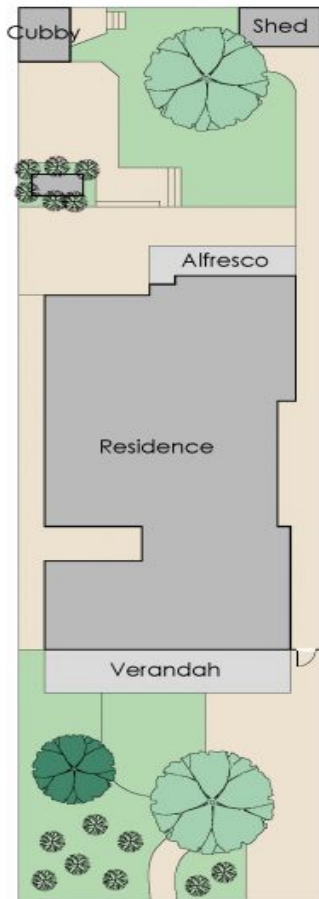
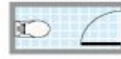
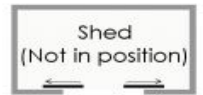
This is the heart of the home with a sunny modern kitchen overlooking the formal and informal sitting rooms which feature bifold doors at one end and french doors at the other.

Here, the indoor spaces flow seamlessly out onto a generous decked patio with a lush garden setting that provides a cubby for the kids and tranquil seating for family and friends to gather.

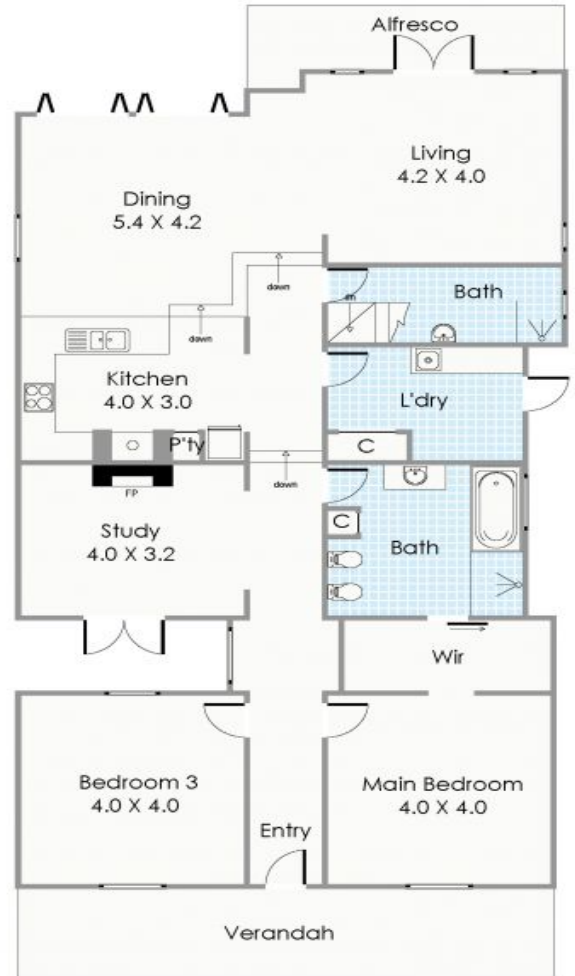
Land: 508m2

East Fremantle 22 Glyde Street

HOUSE: 3 BED | 2 BATH | 2 CAR
VIEW: Sat, 19 Jan @ 11:15 am - 12:00 pm
CONTACT: Linda Digby 0402 122 267
OFFICE: Perth 08 9336 1166
ONLINE: <http://www.dethridgegroves.com.au>



Glyde Street



Approximate Areas

GROUND FLOOR	
Residence:	154.2m ²
Alfresco:	9.1m ²
Verandah:	19.2m ²
FIRST FLOOR	
Residence:	28.3m ²
Balcony:	7.9m ²
Total Area: 218.7m ²	

All measurements are estimates
All dimensions are in metres.
Plans are for demonstration only.
www.cribcreative.com.au



22 Glyde Street, East Fremantle

East Fremantle, WA
22 Glyde Street

Disclaimer: All information contained herein is gathered from sources we believe reliable. We have no reason to doubt its accuracy, however we cannot guarantee it. All dimensions, measurements and distances are approximates. All interested parties should make and rely upon their own enquiry.
©The Agency Australia Pty Ltd T/A The Agency Estate Agents ABN 90 169 023 233 Corp Licence 10002231 - 397 New South Head Road, Double Bay NSW 2028 | Sydney Australia

