



In Love With Martha

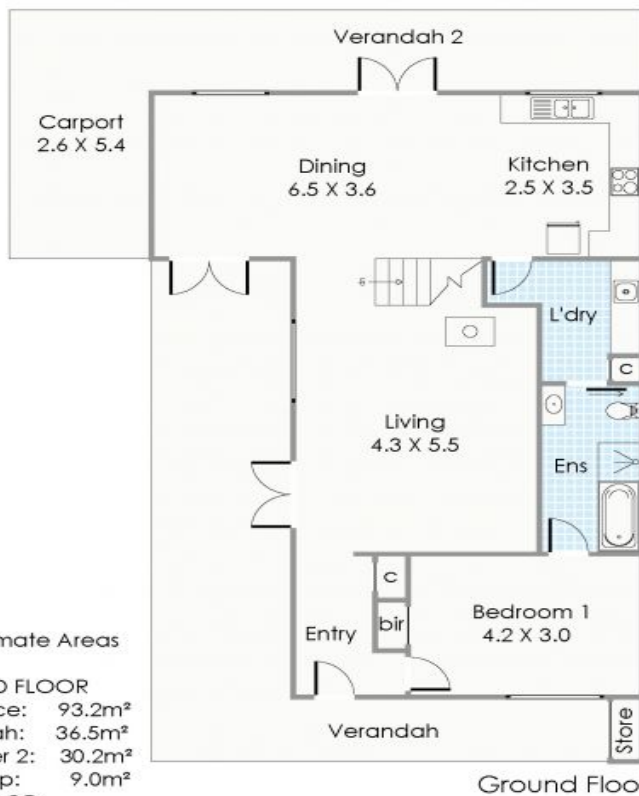
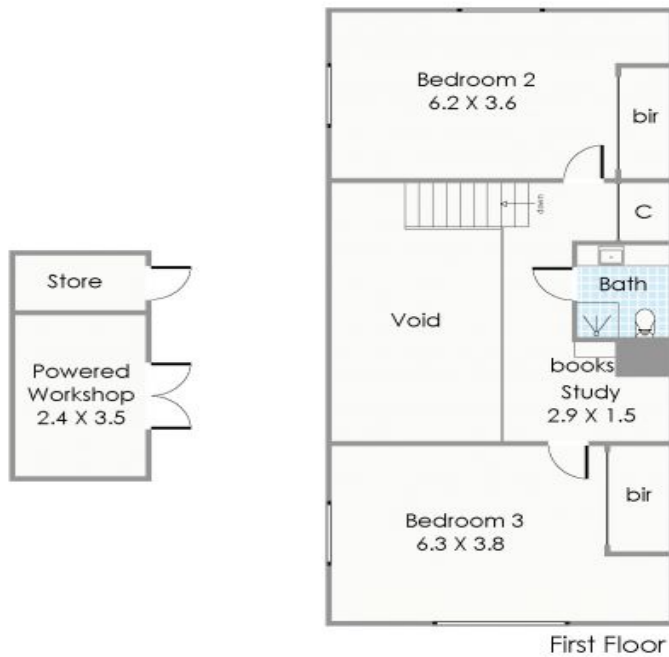
In a popular Fremantle fringe location and positioned within easy walk to all of Fremantle's and South Fremantle's attractions, this lovely home was designed by Chris Rayburn and has been recently updated to create a contemporary home with a well-designed layout.

With a beautiful garden and generous wrap around verandah entry, the home affords a central open plan living area with a wonderful spacious flow, high raked ceilings, cool terracotta floors and a sunny eastern aspect through large windows and doors.

The adjoining large kitchen and dining area opens out to both the rear established garden and to the eastern bricked paved verandah which is a perfect sheltered entertaining area. The ground floor also accommodates a north facing bedroom and a large fully renovated semi en-suite bathroom and adjacent laundry.

Beaconsfield 2/5 Martha Street

HOUSE: 3 BED | 2 BATH | 2 CAR
VIEW: Sat, 19 Jan @ 11:30 am - 12:00 pm
CONTACT: Mary Burns 0413 749 944
OFFICE: Perth 08 9336 1166
ONLINE: <http://www.dethridgegroves.com.au>

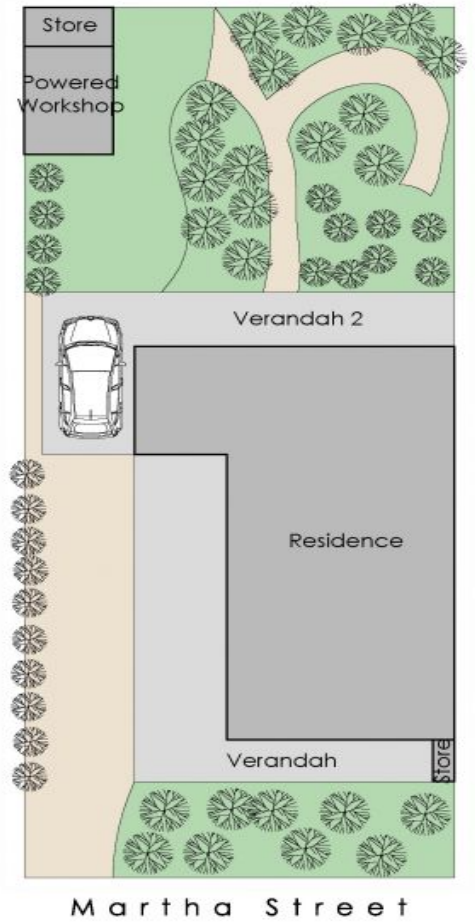


Approximate Areas

GROUND FLOOR	
Residence:	93.2m ²
Verandah:	36.5m ²
Carp/Ver 2:	30.2m ²
Workshop:	9.0m ²
FIRST FLOOR	
Residence:	83.8m ²
Total Area:	252.7m²

All measurements are estimates
All dimensions are in metres.
Plans are for demonstration only.
www.cribcreative.com.au

5A Martha Street, Beaconsfield



Beaconsfield, WA
2/5 Martha Street

Disclaimer: All information contained herein is gathered from sources we believe reliable. We have no reason to doubt its accuracy, however we cannot guarantee it. All dimensions, measurements and distances are approximates. All interested parties should make and rely upon their own enquiry.
©The Agency Australia Pty Ltd T/A The Agency Estate Agents ABN 90 169 023 233 Corp Licence
10002231 - 397 New South Head Road, Double Bay NSW 2028 | Sydney Australia

