



Unprecedented Sophistication

Positively renovated, this Federation Bungalow brick and iron cottage has been extensively restored and extended to offer unprecedented sophistication in a popular city precinct within walking distance to all of Fremantle's attractions.

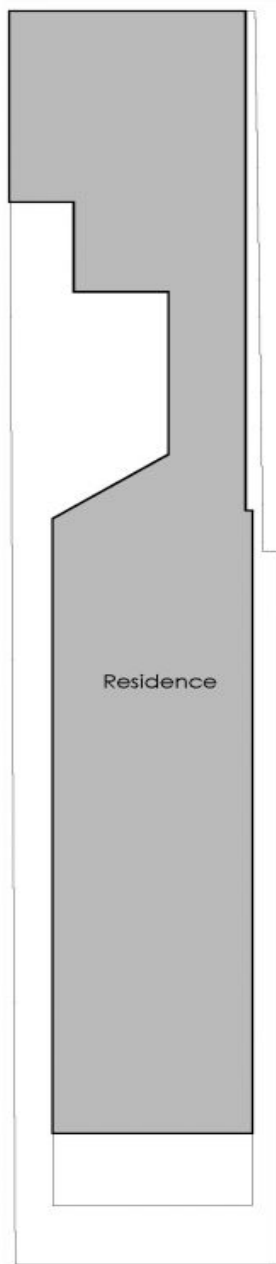
The character integrity has been artfully preserved and enhanced while successfully incorporating a very stylish, modern interior and a contemporary extension creating a generous 4 bedroom, 3 bathroom residence.

The original cottage affords the central passage, 2 very good-sized rooms currently used as a sitting/lounge room, and a beautiful guest bedroom with generous built study nook and robe. There is a very stylish bathroom adjoining the bedroom. All rooms feature high ceilings, beautiful Jarrah floors, double sash windows and shutters and passage arch.

Land: 281m2

Fremantle 25 Howard Street

HOUSE: 4 BED | 3 BATH | 1 CAR
CONTACT: Mary Burns 0413 749 944
OFFICE: Perth 08 9336 1166
ONLINE: <http://www.dethridgegroves.com.au>



Howard Street
Approximate Areas

GROUND FLOOR
 Residence: 138.0m²
 Garage: 39.0m²
 Verandah: 12.4m²
FIRST FLOOR
 Residence: 114.2m²
Total Area: 303.6m²

All measurements are estimates
 All dimensions are in metres.
 Plans are for demonstration only.
www.cribcreative.com.au



Ground Floor



First Floor



25 Howard Street, Fremantle

Fremantle, WA
25 Howard Street

Disclaimer: All information contained herein is gathered from sources we believe reliable. We have no reason to doubt its accuracy, however we cannot guarantee it. All dimensions, measurements and distances are approximates. All interested parties should make and rely upon their own enquiry.
 ©The Agency Australia Pty Ltd T/A The Agency Estate Agents ABN 90 169 023 233 Corp Licence 10002231 - 397 New South Head Road, Double Bay NSW 2028 | Sydney Australia

