



Substantial Family Home on Full Block

Renovated and refurbished - 38 Goldsmith Road is a substantial family home on a full-size block ideal for a family who need room to move. Over two levels with multiple living areas and a huge alfresco there is room to move and grow here! This attractive two-level home is certainly a standout in the street. A whopping 335sqm of house on a full 737sqm lot!

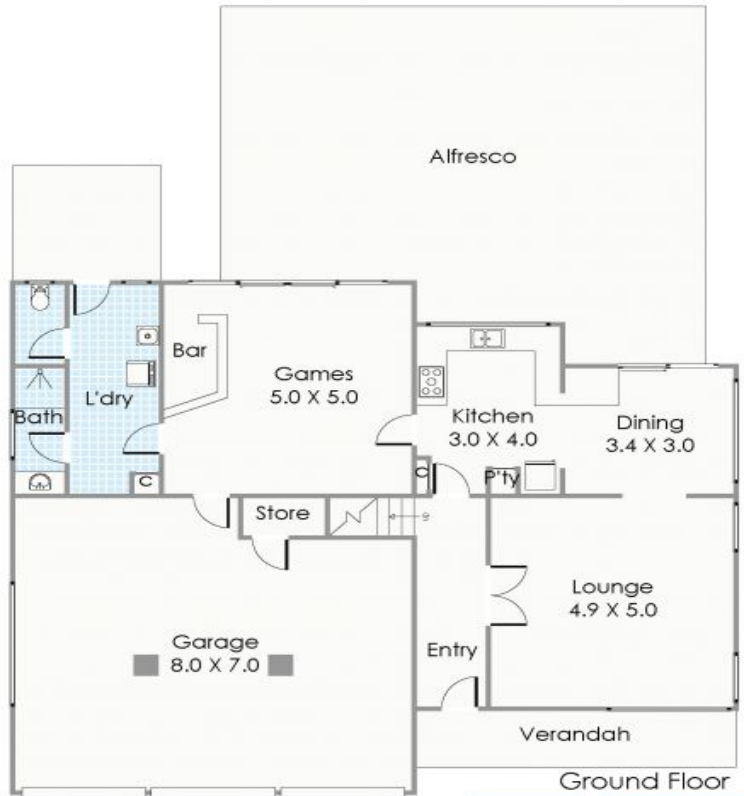
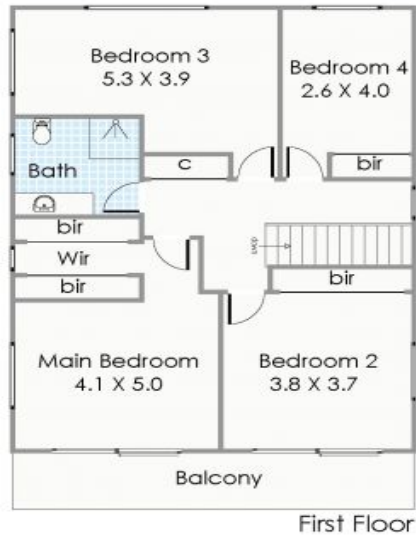
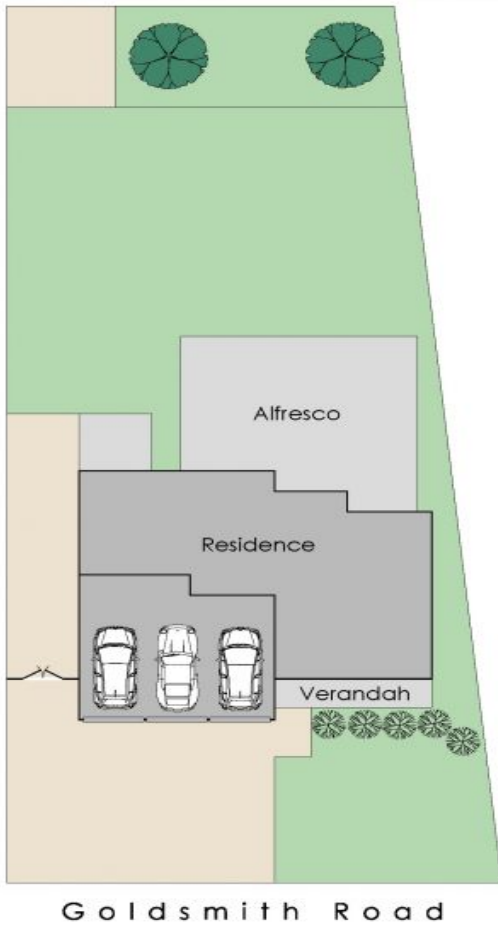
Relax and appreciate the views from the balcony off the bedrooms or enjoy everyday living and entertaining downstairs with separate lounge, renovated kitchen, dining room and games room.

The ground floor of the home offers a front lounge with attractive raked ceilings a separate dining room adjoins the kitchen and outside alfresco. A second living room is massive and enjoys separate access to the back yard. A large built in bar is an entertainer's delight! The bathroom and laundry and conveniently close by.

Land: 737m²

Spearwood 38 Goldsmith Road

HOUSE: 4 BED | 2 BATH | 3 CAR
VIEW: Sat, 19 Jan @ 1:00 pm - 1:30 pm
CONTACT: Chanel Majeks 0403 246 377
 Christine Majeks 0402 762 601
OFFICE: Perth 08 9336 1166
ONLINE: <http://www.dethridgegroves.com.au>



Approximate Areas

GROUND FLOOR	
Residence:	101.1m ²
Garage:	54.5m ²
Alfresco:	73.0m ²
Verandah:	9.1m ²
FIRST FLOOR	
Residence:	85.9m ²
Balcony:	11.3m ²

Total Area: 334.9m²

All measurements are estimates
All dimensions are in metres.
Plans are for demonstration only.
www.cribcreative.com.au



**38 Goldsmith Road,
Spearwood**

Spearwood, WA
38 Goldsmith Road

Disclaimer: All information contained herein is gathered from sources we believe reliable. We have no reason to doubt its accuracy, however we cannot guarantee it. All dimensions, measurements and distances are approximates. All interested parties should make and rely upon their own enquiry.
©The Agency Australia Pty Ltd T/A The Agency Estate Agents ABN 90 169 023 233 Corp Licence
10002231 - 397 New South Head Road, Double Bay NSW 2028 | Sydney Australia

