



View to Garden Island - Make Your Offer

Welcome to this well presented 3 bed, 1 bath home sitting on a 724sqm block, zoned R30, in the sought-after suburb of Hamilton Hill.

Located on the Eastern side at the highest point of Quickly Crescent, this property offers ocean views and views of Garden Island.

The double brick and tile home has an entrance hall, formal lounge and a considered floor plan. With the bedrooms and the living area having good separation.

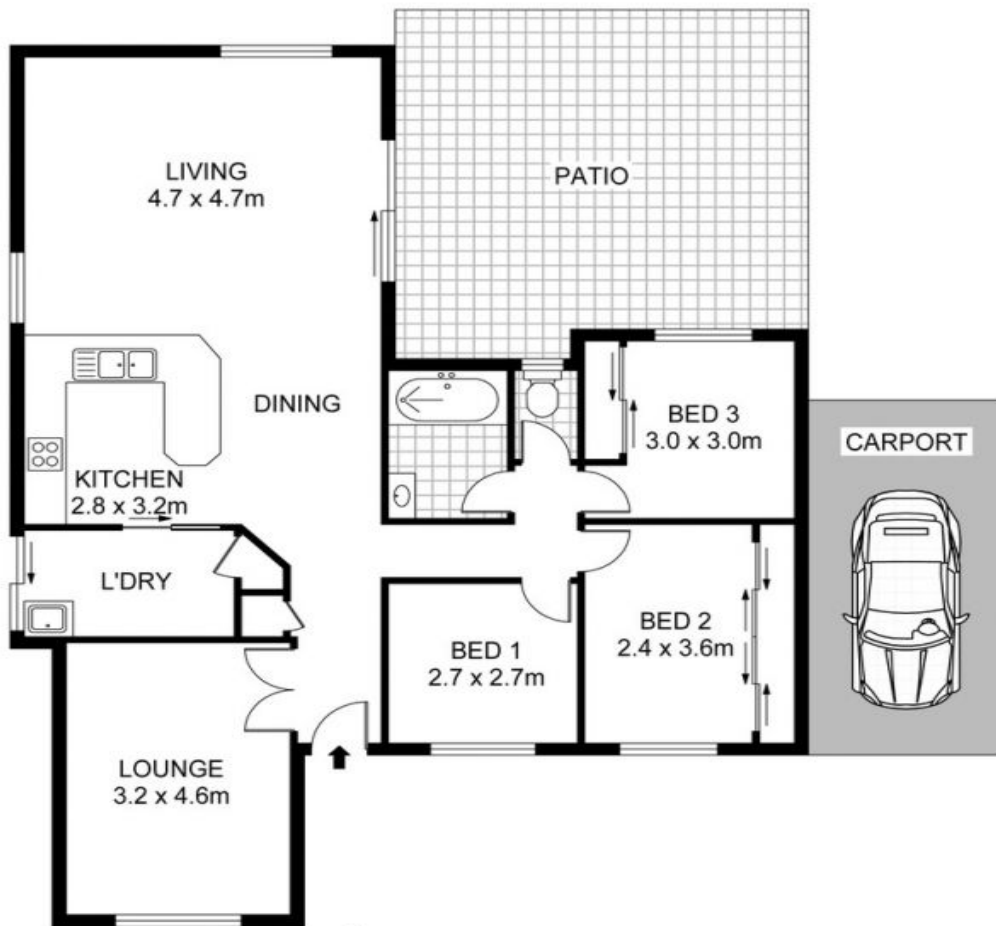
The kitchen, located in the heart of the home, overlooks the dining area and the living area. With direct access to the outdoor entertaining area and garden, this makes entertaining a breeze. The garden area is large enough for a game of footy or cricket.

The main bedroom has built in robes. The secondary bedrooms are a good size, with one offering built in robes and can easily accommodate a queen size bed. The family bathroom is located adjacent to the bedrooms.

Council Rates: \$1,644/year (approx)
Land: 724m2

Hamilton Hill 69 Quickly Cres

HOUSE: 3 BED | 1 BATH | 1 CAR
VIEW: Sat, 19 Jan @2:00 pm - 2:30 pm
CONTACT: Chanel Majeks 0403 246 377
Christine Majeks 0402 762 601
OFFICE: Perth 08 9336 1166
ONLINE: <http://www.dethridgegroves.com.au>



Scale in metres. Indicative only. Dimensions are approximate. All information contained herein is gathered from sources we believe to be reliable. However we cannot guarantee its accuracy and interested persons should rely on their own enquiries

Area	M ²
Living	106
Patio	33



69 Quickly Crescent, Hamilton Hill

Floor Plan: www.project3axis.photography

Hamilton Hill, WA

69 Quickly Cres

Disclaimer: All information contained herein is gathered from sources we believe reliable. We have no reason to doubt its accuracy, however we cannot guarantee it. All dimensions, measurements and distances are approximates. All interested parties should make and rely upon their own enquiry.
©The Agency Australia Pty Ltd T/A The Agency Estate Agents ABN 90 169 023 233 Corp Licence 10002231 - 397 New South Head Road, Double Bay NSW 2028 | Sydney Australia

