



Riverside Terrace with Architect Extension

6b Glyde Street has authentic appeal, with a free flowing extension designed by award winning local builders Kensington Design. Terraced houses exude enormous architectural charm and are highly sought after, this one is no exception.

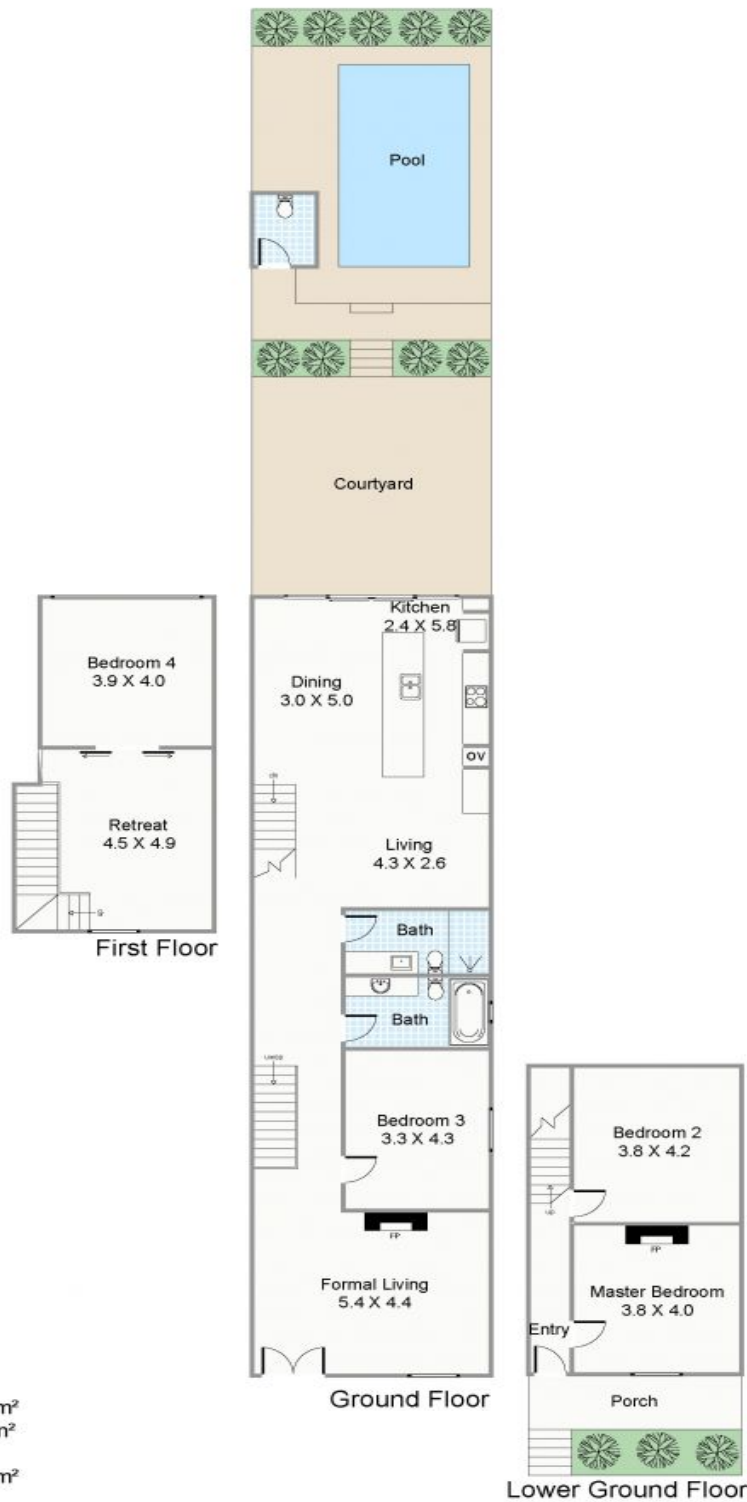
With 4 large bedrooms, 2 bathrooms this home provides a seamless transition between the past and the present. Blessed with inviting sitting areas inside and out, there are many options for relaxation or entertaining.

From the front balcony you capture a fabulous view of the river, port city and ocean beyond. At the other end of the home is an inviting kitchen / dining area that opens onto the limestone patio, and elevated pool setting - a perfect retreat at the end of the day.

Across multiple levels there are several sitting rooms and bedrooms for the family to spread out. The heart of the home on the mid-level also accommodates the main bedroom and bathrooms.

East Fremantle 6B Glyde Street

HOUSE: 4 BED | 2 BATH |
VIEW: Sat, 19 Jan @ 12:15 pm - 1:00 pm
CONTACT: Linda Digby 0402 122 267
OFFICE: Perth 08 9336 1166
ONLINE: <http://www.dethridgegroves.com.au>



Approximate Areas

LOWER GROUND FLOOR

Residence: 41.2m²
 Porch: 7.3m²

GROUND FLOOR

Residence: 116.6m²

FIRST FLOOR

Residence: 38.8m²

Total Area: 203.9m²

All measurements are estimates
 All dimensions are in metres.
 Plans are for demonstration only.
 www.cribcreative.com.au

← 2B Glyde Street, East Fremantle



East Fremantle, WA
 6B Glyde Street

Disclaimer: All information contained herein is gathered from sources we believe reliable. We have no reason to doubt its accuracy, however we cannot guarantee it. All dimensions, measurements and distances are approximates. All interested parties should make and rely upon their own enquiry.
 ©The Agency Australia Pty Ltd T/A The Agency Estate Agents ABN 90 169 023 233 Corp Licence
 10002231 - 397 New South Head Road, Double Bay NSW 2028 | Sydney Australia

